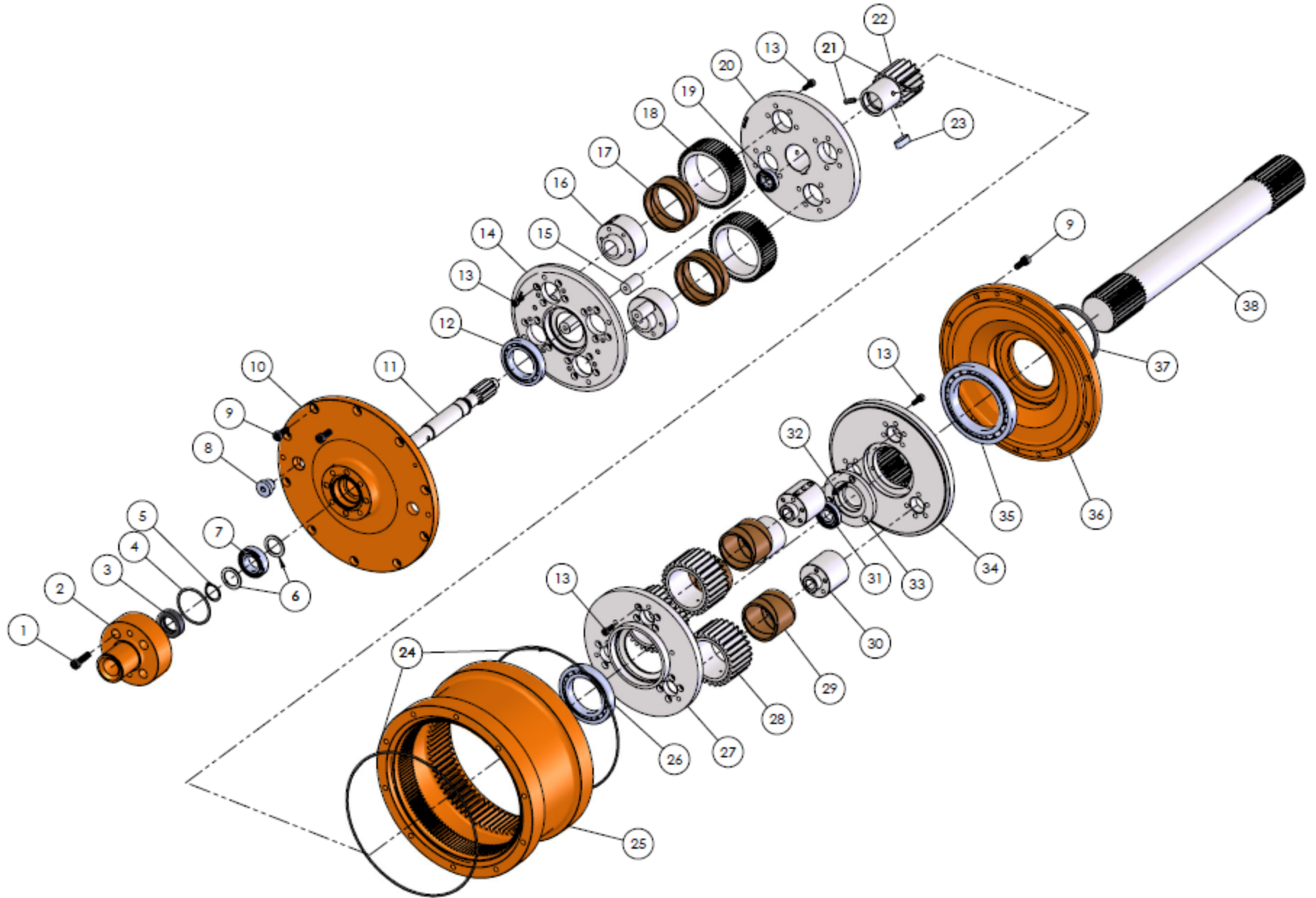
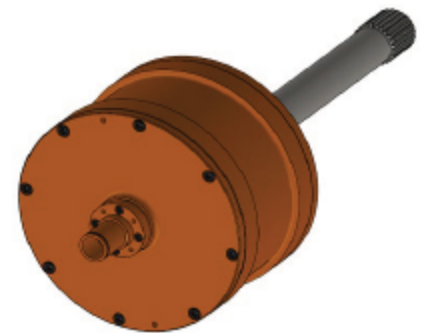


Rev Tech LC - Aftermarket Parts for 3.5 Gearbox



Item#	Part #	Description	Qty	Item#	Part #	Description	Qty
1	160100	SHCS 8 - 1.25 x 30 mm	4	20	162102	1st Stage Cover	1
2	160200	Seal Retainer (for GS Coupling)	1	20-A	162100	1st Stage Cover w/2nd Stage Pinion	1
3	160300	Oil Seal	1	21	162300	Dowel Pin 6 x 30mm	2
4	160700	O'Ring 3 x 54 H70	1	22	162101	2nd Stage Pinion	1
5	160400	Snap Ring 3100-98	1	23	162104	Key	1
6	160501	Spacer	2	24	161300	O'Ring 5.7 x 239.3 H70	2
7	160501A	Bearing 6005	1	25	162400	Ring Gear Housing	1
8-A	160900	Oil Plug (Metric)	2	26	162500	Bearing 16012	1
8-B	160901	Oil Plug (Alt. Std Pipe Plug)	2	27	162600	2nd Stage Housing	1
9	161100	SHCS 8 - 1.25 x 20 mm	20	28	162800	2nd Stage Planet Gear	3
10	160800	Outside Cover	1	29	162900	Bronze Bearing	3
11	160600	1st Stage Pinion (for GS Coupling)	1	30	163000	2nd Stage Axle	3
12	161400	Bearing 16009	1	31	163100	Bearing 16004	1
13	161600	SHCS 6 - 1.0 x 16mm	56	33	163202	Spline Plug	1
14	161500	1st Stage Housing	1	34	163200	2nd Stage Cover Spline Hub	1
15	161901	1st Stage Cage Support	4	35	163500	Bearing 16017	1
16	161900	1st Stage Axle	2	36	163800	Inside Cover	1
17	161800	Bronze Bearing	2	37	163600	O'Ring 6 x 85 H70	1
18	161700	1st Stage Planet Gear	2	38	164100	Drive Shaft	1
19	162000	Bearing 16003	1				



* Rev Tech LC is an independent centrifuge gearbox part supplier for various OEM companies and is not affiliated with these OEM companies.